

Exercise Sheet 3

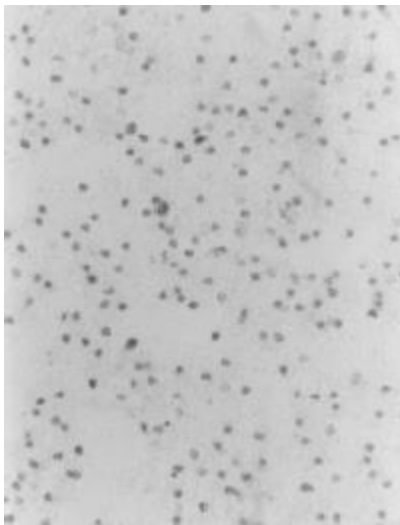
Docente: Miguel Tavares Coimbra

1. Histograms

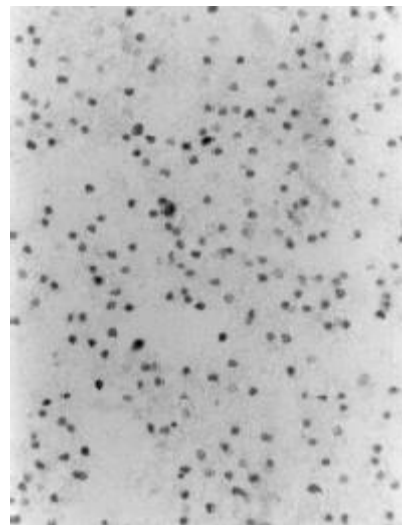
- Build a function that calculates the Intensity (HSI) histogram of an image.
- Compare the histogram you have obtained from the image “*lena_intensity*” with the image “*Histogram_lena_intensity*” (see support images)
- [Optional] Display the histogram in a new window (*Frame*)
 - i. Change the function paint (public void paint(Graphics g)) of the new window, that should draw a histogram based on an internal variable of type int[256].
 - ii. Use classes from Java.awt.Graphics: drawLine, drawRect, etc.

2. Dynamic range manipulation

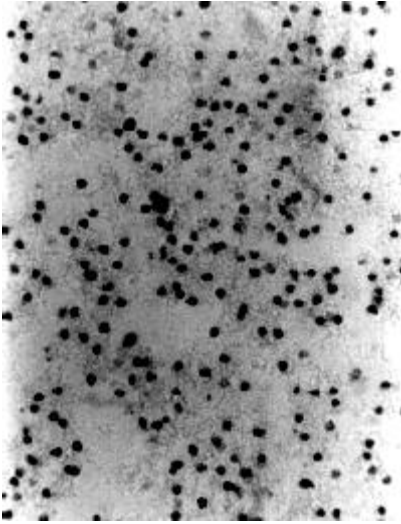
- Build a function that applies *contrast stretching* to an image.
 - i. Use the minimum and maximum value of the histogram
 - ii. Use the values between 5% and 95% of the pixel distribution within the histogram (i.e. ignore 10% of all the image pixels)
- Apply the function to the image “*dots*” and compare it with the image “*dotsEnhancedContrast*”, where the 5% - 95% values were used.
- [Optional] Build a function that applies *histogram equalization*.



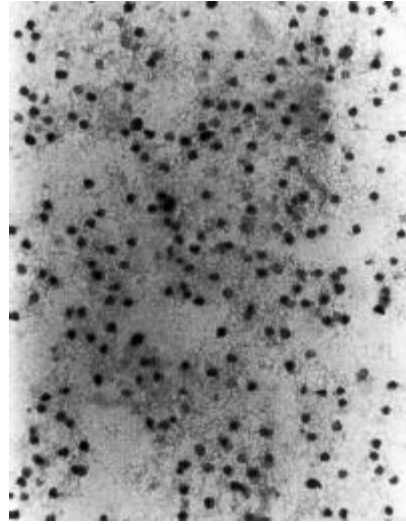
a) Dots.jpg



b) Contrast stretching (0-100%)



c) Contrast stretching (5%-95%).



d) Histogram equalization